

FORTRESS GARDENS

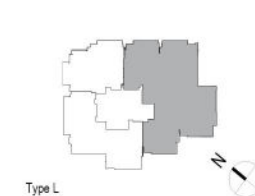
Q3 · TIGNÉ POINT

Penthouse 57

Level 11

3 BEDROOMS
3 BATHROOMS

Internal Area: 267 sqm
External Area: 107 sqm
Total Area: 374 sqm



This drawing is not to scale and items shown in the apartment are included merely to illustrate the apartment's potential. Total square metres (sqm) are approximate and are measured on an internal perimeter basis and exclude service shafts.